

Bringing together the expertise of
leading equipment manufacturers.
A Revolutionary Transport System
Powered by AGVs.



AGV AUTOMATIC GUIDED VEHICLE

An AGV is an unmanned vehicle that automatically transports goods.

AGV × Manufacturing Expertise.

We offer optimal solutions based on our extensive experience as an equipment manufacturer.

Eco-friendly and smart.

By equipping our eco-friendly electric devices, we contribute to achieving carbon neutrality.

Adaptable to various transport needs.

We also offer transport equipment designed for integration with AGVs.

Variations

Examples of Compatible Equipment Configurations

All devices are battery-powered, allowing them to be mounted on AGVs for flexible and independent operation.



Type

Available in two types : resin and sheet metal.

300kg

W (Width) × L (Length) × H (Height)
W 600 × L1,430 × H260

1ton

W (Width) × L (Length) × H (Height)
W1,100 × L1,700 × H470



Features

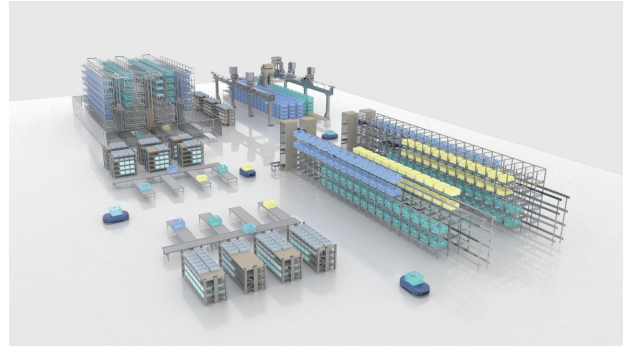
Flexible

Seamless integration with production equipment enables flexible inter-process transport, streamlining the entire production workflow.



Total Coordination

With decades of technical expertise, our system integrators provide end-to-end support from automated warehouses and AGVs to complete system integration.



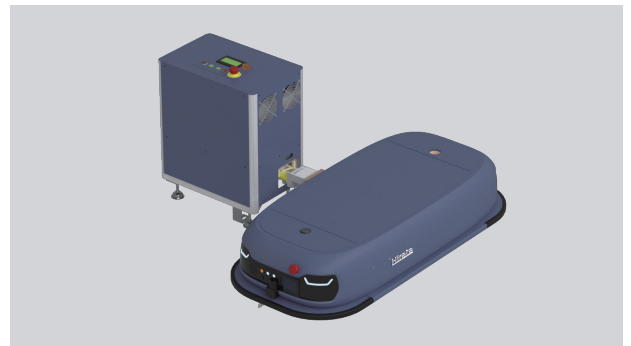
Computer Control

A centralized computer system enables efficient management and operation of multiple AGVs.



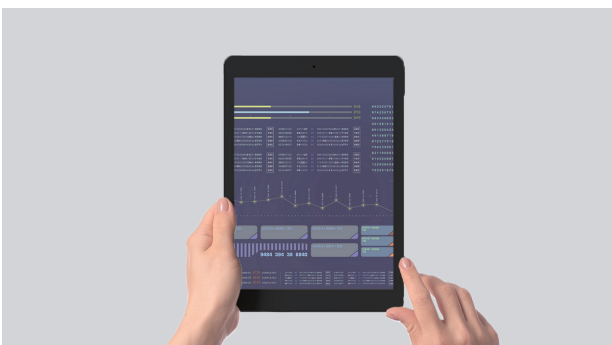
Connected Charging

A connection arm extends from the charger to automatically connect with the AGV's terminal for efficient charging. Automated charging boosts work efficiency by eliminating the need for manual intervention.



Tablet Operation

A single tablet enables a wide range of operations with ease and flexibility. Intuitive control is possible—just like using a joystick.



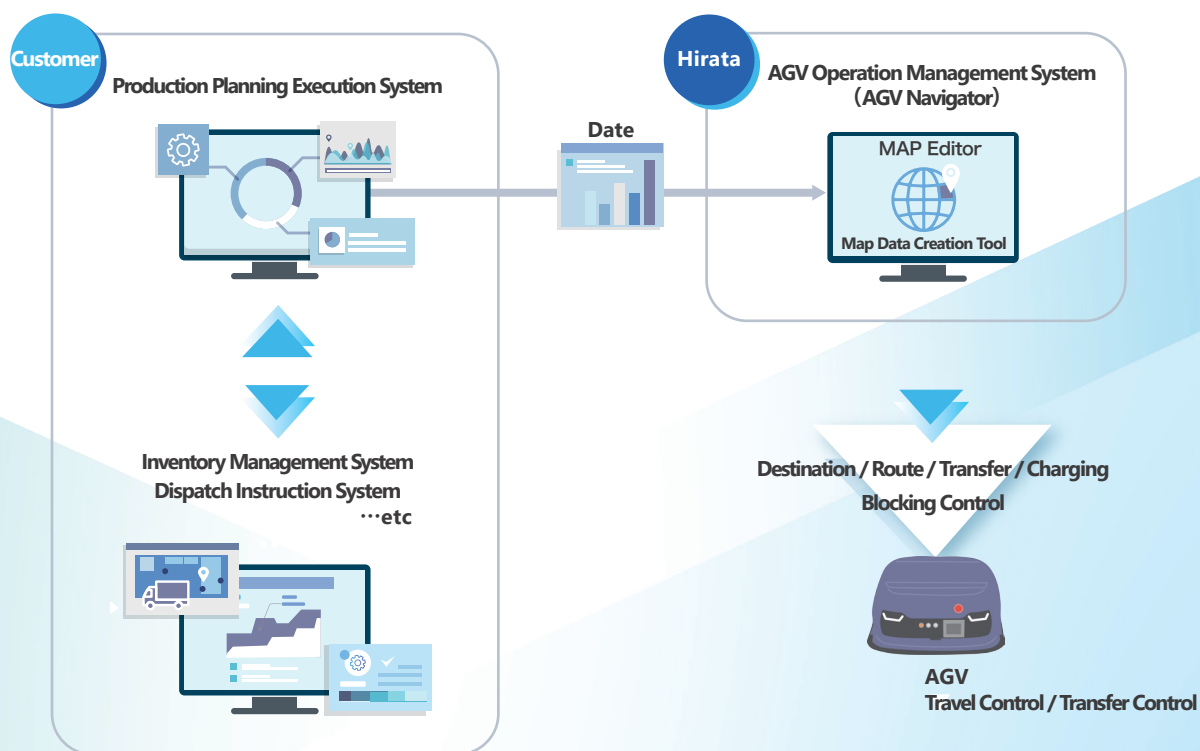
Safety

- Category 3
- UL Compliant
- Obstacle Detection System
- JIS D6802 : 2022
- ISO 3691-4

Specification Table

| Item | 300kg type | 1ton type |
|--|---|------------------------|
| Mounted Equipment Type | Conveyor / Lifting / Turn / Towing | |
| Vehicle Dimensions (mm) W (Width) × L (Length) × H (Height) | W600 × L1,430 × H260 | W1,100 × L1,700 × H470 |
| Weight (kg) (in cluding battery) | 150 | 470 |
| Maximum Load Capacity (kg) | 300 | 1,200 |
| Travel Speed (m/min) Load Capacity (Empty) Load Capacity (Loaded) | 60 (60) | 60 (36) |
| Minimum Turning Radius (mm) | 600 | 800 |
| Climbing Ability (%) | 1.5 | 5 |
| Travel Performance | Forward / Reverse / Spin Turn (Turning) | |
| Stop Accuracy (mm) | ±5 | |
| Charging Method | Contact-type Auto Charging | |
| Battery | Lithium-ion (48V 53Ah) | |
| Communication Method | Wi-Fi | |
| Guidance Method | ①Magnetic Tape ②Date Matrix ③Laser ④Floor Surface ⑤Vision | |
| Safety Devices | Emergency Stop Button/Collision Bumper/Laser Senser/Melody Horn/Indicator Light | |
| Standards | JIS D6802:2022 / ISO 3691-4 | |
| Control Circuit Specs | PNP | |

System Configuration



[Contact]

Hirata

Hirata Corporation Kanto Division

10-2 Hiraide Kogyodanchi, Utsunomiya, Tochigi, 321-0905 Japan TEL: <+81>(28)-661-3333 WEB: <http://www.hirata.co.jp/>

- Safety Precautions**
- Complying with relevant laws and regulations and standards, and please take a risk prevention for safety.
 - Read instruction manual carefully before use, and please surely use correctly.

● Information in this brochure is subject to change without notice. ● The pictures in this brochure are images, the actual product might be different.

20250905_01