

► Key initiatives we endorse

- United Nations Global Compact
- Task Force Climate-related Financial Disclosures (TCFD)



► Inclusion in ESG indexes (as of July 1, 2024)

- FTSE Blossom Japan Index
- FTSE Blossom Japan Sector Relative Index
- S&P/JPX carbon-efficient index



FTSE Blossom
Japan Index



FTSE Blossom
Japan Sector
Relative Index



IR
Information



Sustainability



Automobile-related
Production Equipment



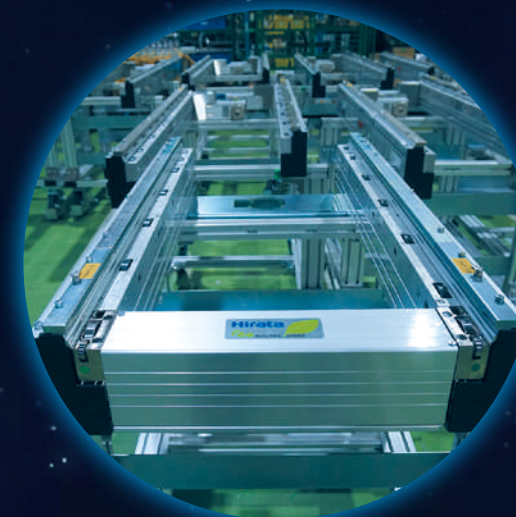
Semiconductor-related
Production Equipment



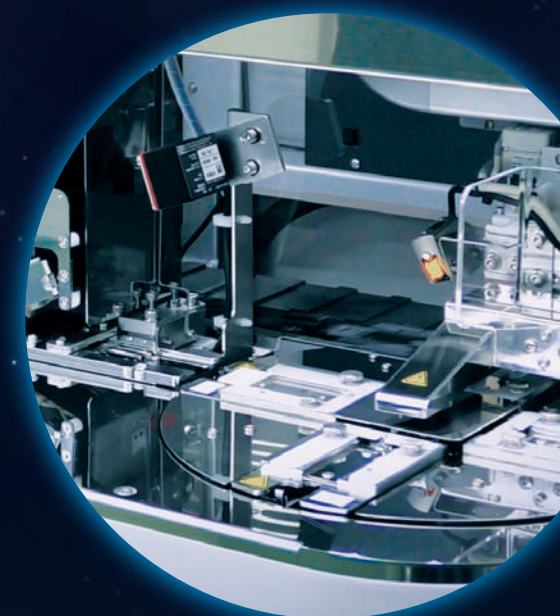
Industrial Robots



All-electric transport system
EcoElectric series



Medical / Chemistry
and Physics Devices



Hirata's mission is to
“build production equipment
in various industrial fields.”

Since our founding in 1951, Hirata has been manufacturing and marketing production systems for various industrial sectors, such as the automotive, semiconductor, and home electronics industries. As a line builder, Hirata provides diverse production systems that help customers resolve their manufacturing issues, while expanding into other areas such as environmentally friendly products and medical, chemistry and physics devices.

We are always looking into new technologies in order to offer innovative solutions to customers around the world.

Providing reliability and building trust with customers in manufacturing sites around the world.

Our History



SOLUTIONS

Pursuing human-driven production systems

Pallets carried by conveyor can be stopped in front of workers. Though this is a common production system today, this free-flow conveyor based on the above concepts was first developed and introduced by us in 1970.

Conveyors do not control workers, but are an effective tool controlled by workers. This relieves workers from unnecessarily stressful tasks, and this in turn improves productivity.

This is an example of a guiding principle of our management philosophy: "Respect Humanity."

This way of thinking continues to this day as a foundational principle for our manufacturing systems.

Our Advantages

Engineering Capabilities

While pursuing our mission of "Customer-oriented manufacturing", we utilize the technologies and know-how we have accumulated over many years to offer high-level solutions.

Hirata

Manufacturing Capabilities

Enhancing the reliability of our products and realizing reduced cost with shorter delivery times

Support Capabilities

Backing up our customers with our experience in a diverse, global market.

In-house Systems Integration

As a line builder, we offer integration services to our customers, from development and proposals to engineering, assembly, installation, maintenance, and support. We support global manufacturing with our technology and know-how in every aspect of production systems.

Creative and Unique Concepts

Proposal Development

- System Engineering
- Process Engineering
- Solution Review & Optimization



Firm Proposals

Machine Design

- Mechanical Engineering
- Controls Engineering
- Software Development
- 3D Emulation



We aim to develop production systems in collaboration with our customers, utilizing a "total system" perspective. This includes management of customer requirements, components, process sequences, machine functionality, durability, quality and risk analyses and production efficiency.

In-house component manufacturing

Component manufacturing

- Machine components
- Control boards
- Wire harnesses



Ensuring high-reliability

Assembly, inspection and testing

- In-house assembly
- Trial Runs
- Inspection and testing



Realization of Shortened Delivery Times

Installation, run-off and start-up support

- On-site installation
- Testing



We provide services with consistently high quality through integrated systems that address the entire process, from handling of individual components to installation, run-off, and start-up. Furthermore, we achieve low cost and short delivery time utilizing our in-house manufacturing equipment. We make our customers' vision a reality while meeting the needs of advanced, modern manufacturing.

Experienced on-site support

Maintenance service support

- Practical training and support
- Maintenance, repair and overhaul
- Updates, Upgrades and Retools

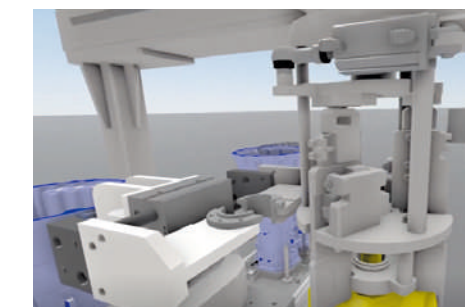


Hirata has established six domestic production facilities in Japan and nine subsidiaries abroad. We support our customers from a broad perspective, utilizing the experience and know-how we have cultivated at production sites around the world, tailored to production requirements and practices in various countries and regions.

Innovation in Manufacturing

Utilizing Digital Transformation

By means of virtual commissioning using emulation software, we recreate factories in a VR space. With this method, customers can validate their equipment operation from their own office or factory. Enabling machine trials without the need to wait for procurement and assembly, these advance activities contribute to shortening actual design and manufacturing time.



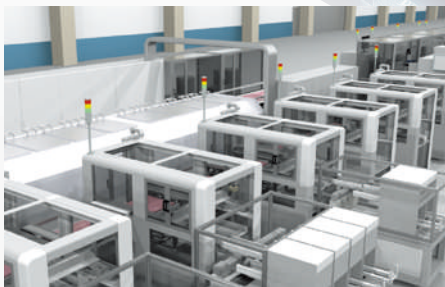
Automobile-related Production Equipment

We provide customers around the world with production equipment to create essential automobile components such as engines, transmissions and electric drive units for traditional internal combustion engine (ICE) vehicles, electric vehicles (EVs), hybrid vehicles (HVs) and plug-in hybrid vehicles (PHEVs).
As a line builder, we provide a complete, comprehensive solution that includes all the services required for every stage of manufacturing, from design and procurement to production and commissioning.

Examples of Production Lines



EDU Assembly Lines

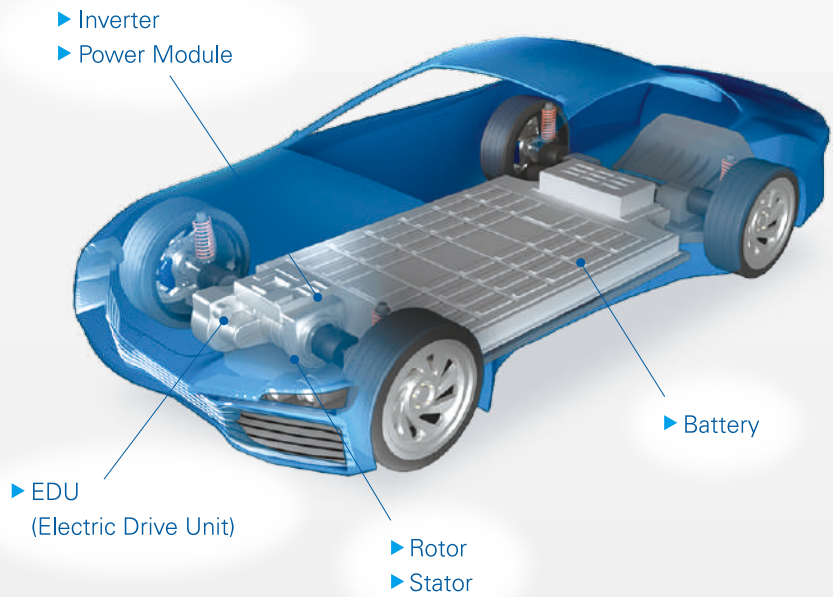


IGBT Assembly Lines



Battery Assembly Lines

Products made with Hirata's production systems



Power Module Related Equipment



Moulder



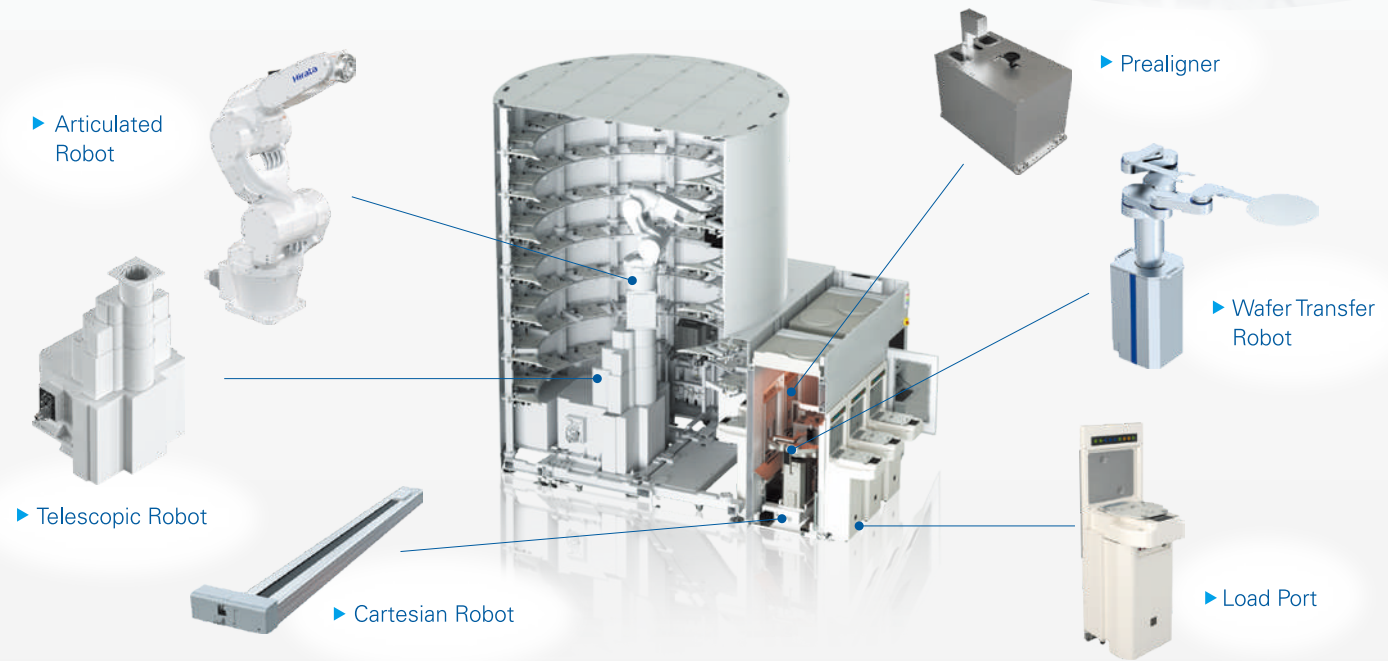
Vacuum Formic Acid Reduction Reflow Oven

Semiconductor-related Production Equipment

In the field of semiconductor-related production equipment, we manufacture and market load ports which transfer silicon wafers to individual processing stations, wafer transfer robots (atmospheric and vacuum environments), EFEMs which integrate load ports and wafer transfer robots, and vacuum platforms. We also manufacture and market load ports, transfer robots and related Equipment Front End Modules (EFEMs) for FOPLP.

N2 Wafer Stocker

We have made high storage efficiency possible through optimal design using in-house components. We contribute to protecting the global environment by reducing N2 consumption with wafer storage in N2 FOUP.



We have a large cleanroom where we manufacture our semiconductor and electronic components. This allows us to deliver high-quality products for cleanroom applications.



300mm EFEM / Sorter series



Transfer Robot for FOPLP



Load Port for FOPLP



SMIF Pod Opener

Customers

Major domestic and foreign manufacturers of complete vehicles as well as automotive parts manufacturers

Customers

Major domestic and overseas semiconductor equipment manufacturers and semiconductor device manufacturers

For more information, please check the QR code on the right.

Automobile-related Production Equipment



Power Module-Related Production Equipment



For more information, please check the QR code on the right.

Semiconductor-related Production Equipment



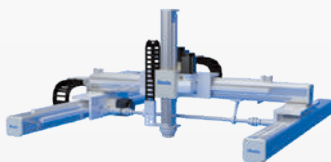
Industrial Robots

We manufacture and market many types of robots and control systems for various industries. Our core industrial robot technology is incorporated into production equipment in a variety of applications such as automotive, semiconductor and others.



▶ AR-F Series SCARA Robot

▶ Multifunctional Teach Pendant



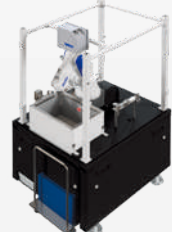
▶ GR Series Gantry Robot



▶ HNC-X8M Robot Controller



▶ MB series Small Cartesian Robot



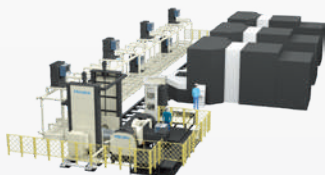
▶ HV-P Series 3D Vision System

Other Equipment

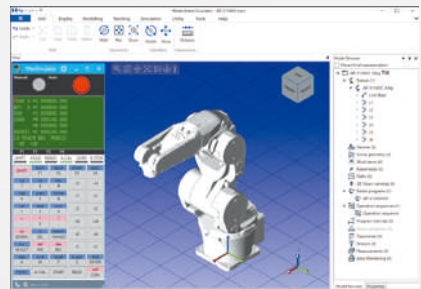
We can handle not only stand-alone robots, but also equipment that applies robot technology.



Automatic Chamfering Machine



Automated Large Pallet Feeding Systems



▶ Hirata Robot Simulator
This is design verification software for robotic production systems.

For more information, please check the QR code on the right.



Industrial Robots

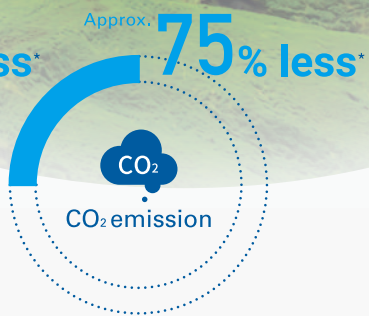
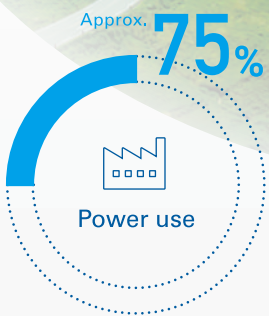
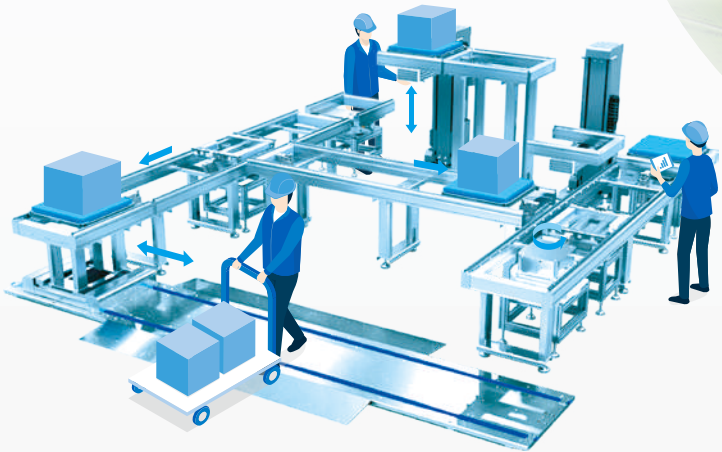


HIRATA EcoElectric Series

EcoElectric Series

Hirata's EcoElectric Series is friendly to people and the environment.

By developing all-electric conveyance as the base for Hirata's production systems, we can reduce the costly infrastructure needed for pneumatic transport, enhance operator safety and reduce the environmental impact of the equipment we provide to our customers.



*Compared to our conventional products
The reduction rate shown here is the representative value to describe the features of the series as a whole.

ALL DC24V



▶ Electric DC Conveyor



▶ Electric DC Roller Conveyor



▶ Electric Pallet Stop



▶ Accumulating Pallet Stop



▶ Electric Slide



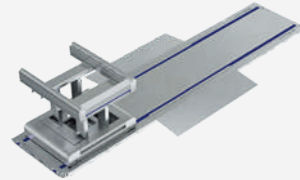
▶ Electric Cylinder



▶ Electric Turn Unit



▶ Electric Pallet Lifter



▶ Electric Traverser Unit



▶ Electric Lift / Position Unit



▶ DC/DC Converter

In-house Developed Brushless DC Motor

Hirata BLUE MOTOR MADE IN JAPAN

All products are equipped with Hirata BLUE MOTOR

*excluding EcoElectric pallet stops



UL1004-1/CSA C22 NO.100-14 (NDMM2/8.E517638)

Conforms to IEC60034-1



Compact

High Efficiency

Key Item

For more information, please check the QR code on the right.



EcoElectric Series

Other Automatic Labor-Saving Equipment

In addition to automobiles and semiconductors, we manufacture and sell production equipment in diverse fields such as medical and scientific equipment, FPD manufacturing and material handling systems.

Medical / Chemistry and Physics Devices

We manufacture and sell medical and scientific instruments used in the development of new drugs and treatments. We are also called upon by medical professionals and medical equipment manufacturers to develop and manufacture automated equipment using our established automation technology.



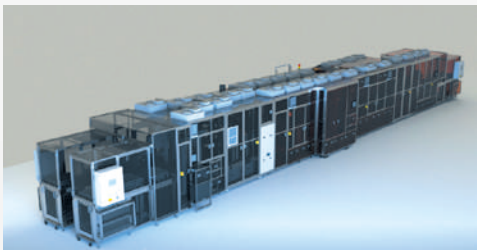
Pathological tissue specimen preparation device EZ-path float

Fully Automatic Continuous Slicer Tissue-Tek Smart Section Sakura Finetek Japan Co., Ltd.

FPD (Flat Panel Display)

In the area of panel manufacturing systems, Hirata provides coating and lamination systems for glass substrates used in organic EL and LCD applications, as well as automatic loading systems utilizing transfer robots.

Lamination



Automotive Panel Laminating Equipment

Logistics (Transfer Machines)

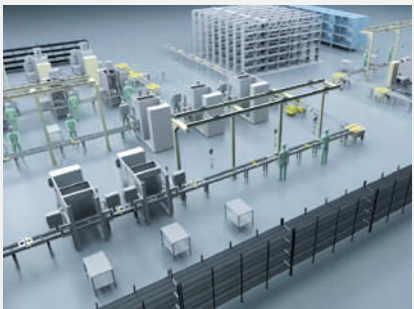
Hirata's earliest product offering, conveyance equipment, is an integral part of all business areas and utilized in an array of different products.



Smart Rackless Stocker



Automated Warehouse Stacker Crane



Distribution Systems and Solutions

Initiatives to Pursue New Markets

Here are some of Hirata's initiatives to pursue new markets in our efforts to realize a sustainable society.

Biological Genetic Resource Market "Plant Pro"



Commercialization of research related to biological genetic resources (mainly plant genetic resources) is one of our initiatives to advance our endeavors to realize a sustainable society. We acquire diverse plants from Argentina and Indonesia after obtaining an "Internationally Recognized Certificate of Compliance." Then, instead of limiting ourselves to in-house research and development, we serve as a intermediary between businesses requesting resource use and the product's country of origin in order to provide research raw materials and product materials.

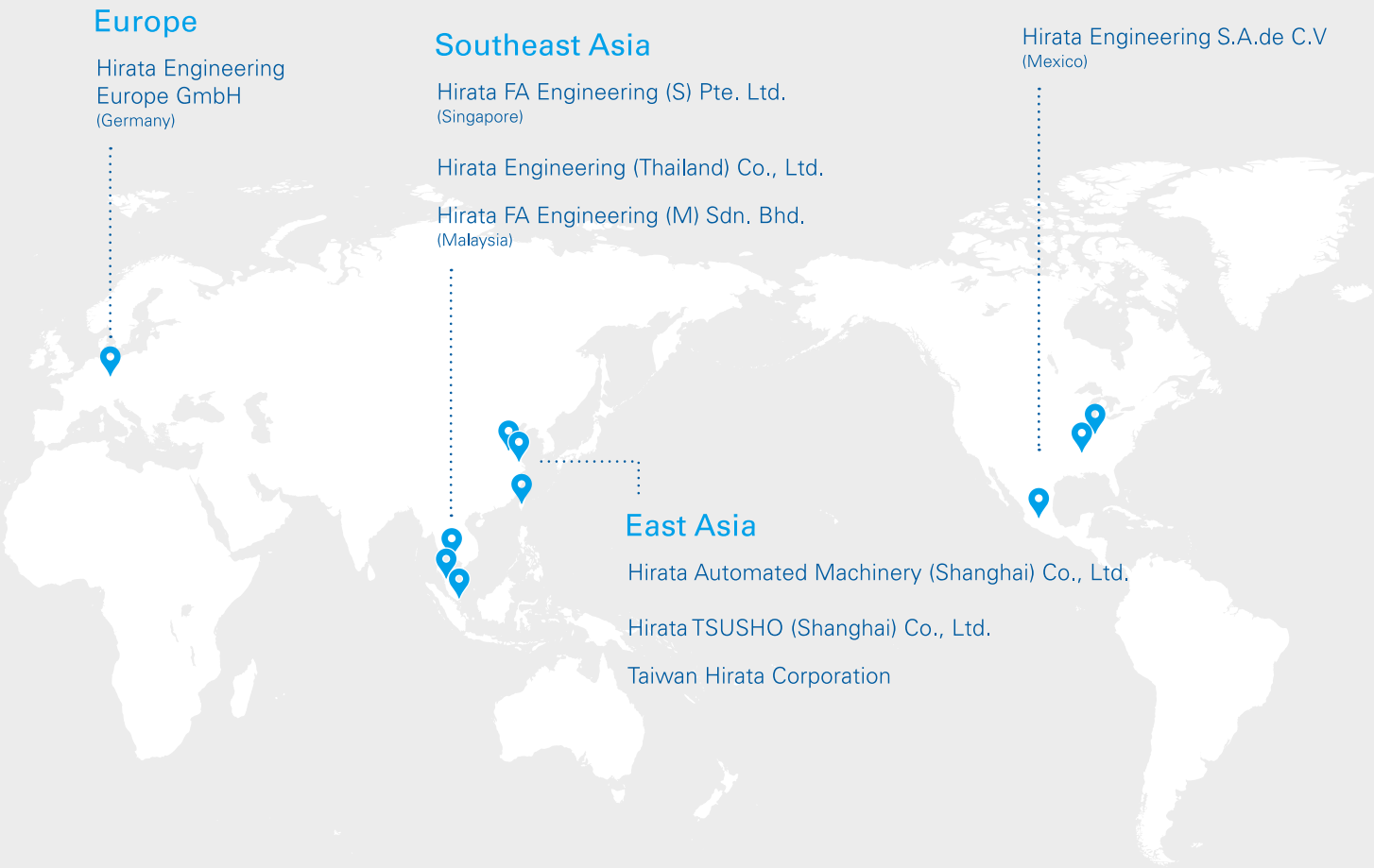
Development of an Ultrasound-guided, Focused Ultrasound Surgery Device



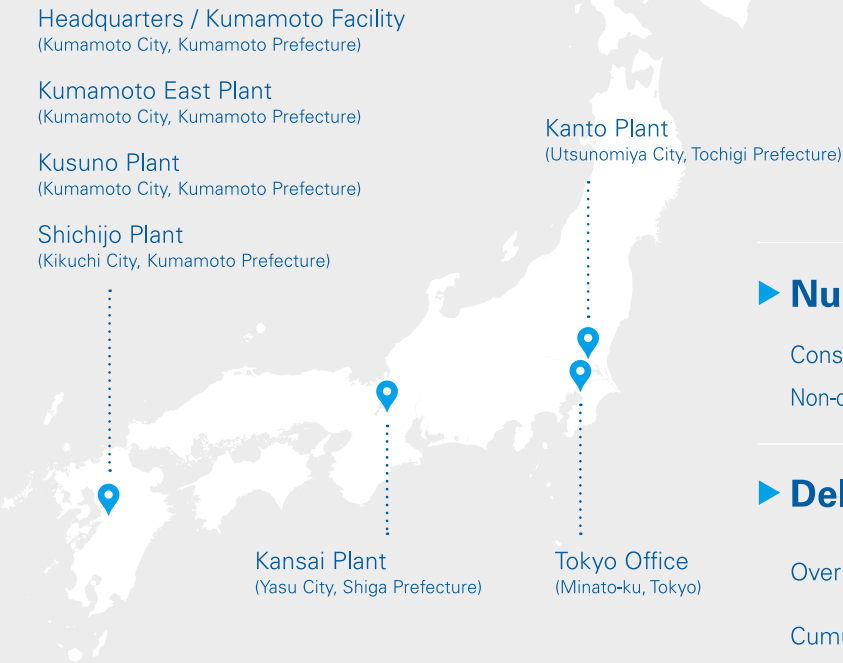
We are developing an ultrasound-guided, focused ultrasound surgery device in collaboration with SONIRE Therapeutics Inc. (SONIRE). It is a groundbreaking device that combines SONIRE's unique medical ultrasound technology with Hirata's collaborative medical robot technology and ensures safety in medical applications. Clinical trials are currently being conducted targeting pancreatic cancer patients, and preparations are underway for the approval and mass production of our treatment device.



9 Overseas Subsidiaries



7 Domestic Branches



3 Domestic Subsidiaries

Taihei Technos Co., Ltd. (Kumamoto City, Kumamoto Prefecture)

Hirata Field Engineering Co., Ltd. (Koshi City, Kumamoto Prefecture)

Trinity Inc. (Chiyoda-ku, Tokyo)

▶ Number of Employees (as of March 31, 2024)

Consolidated: 2,323 (Including 1,967 Regular Employees)

Non-consolidated: 1,419 (Including 1,112 Regular Employees)

▶ Delivery Record

Over **40** countries and regions worldwide

Cumulative total of approx. **1,000** companies

▶ Area of Domestic Production Sites (as of March 31, 2024)

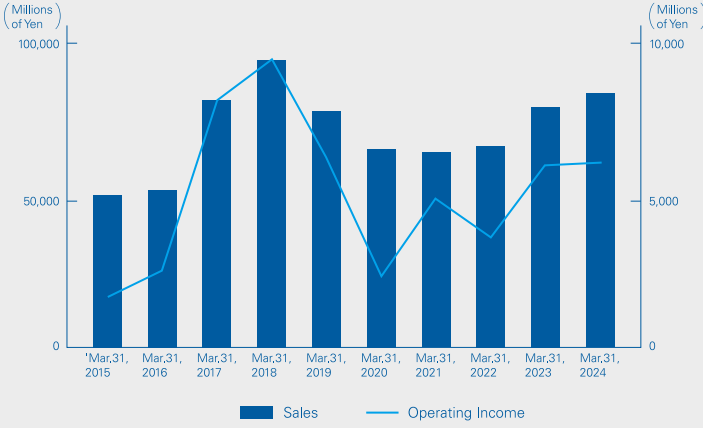
We have the capacity to produce large scale equipment.

Total Site Area: Over **250,000**m²

Manufacturing Floorspace: Over **130,000**m²

Clean Room Floorspace: Over **12,000**m²

▶ Sales and Operating Income (Consolidated)



Company Name	HIRATA Corporation
Headquarters	111 Hitotsugi, Ueki, Kita, Kumamoto, 861-0198 Japan TEL. 81-96-272-0555 FAX. 81-96-272-7901
Representatives	Yuichiro Hirata, President
Date Established	Dec. 29, 1951
Fiscal Year Closed	March
Capital	2,633 Million Yen
Stock Exchange Listings	Prime Market of the Tokyo Securities Exchange (Symbol: 6258)
Primary Client Banks	Higo Bank, Sumitomo Mitsui Banking Corporation, MUFG Bank, Ltd, Kagoshima Bank, The Bank of Fukuoka, Kumamoto Bank, Sumitomo Mitsui Trust Bank
Business Fields	Design and manufacturing of automated assembly and test systems, industrial robots, material handling and transport equipment
Subsidiary Companies	3 Domestic Subsidiaries / 9 Overseas Subsidiaries
Auditing Corporation	KPMG AZSA LLC



Social Contribution Activities

Hirata Group is engaged in social contribution activities such as disaster relief and recovery, environmental protection and the preservation and dissemination of culture. Through its involvement with local communities, we contribute to the realization of a sustainable society.



Disaster Volunteer Activities



"Food Drive" to Support Children's Food Banks



Noh Stage on the First Floor of the Headquarters Building

For more information, please check the QR code on the right.



Company Information