

Hirata

The Global Production Engineering Company

Company Profile

Hirata Corporation



The Global Precision Engineering Company

I. Company Profile

Hirata



Company Name Hirata Corporation

Established December 29, 1951

Headquarters 111 Hitotsugi, Ueki, Kita, Kumamoto, 861-0198 Japan

Representative Yuichiro Hirata, President

Capital 2,633 million yen

Listed Exchange Tokyo Stock Exchange, Prime Market (Code:6258)

Sales 67,087 million yen (Consolidated)
(FY ended March 31, 2022) 54,220 million yen (Non-consolidated)

Number of employees 2,233 (Consolidated)
(as of March 31, 2022) 1,350 (Non-consolidated)

Headquarters (Kumamoto)



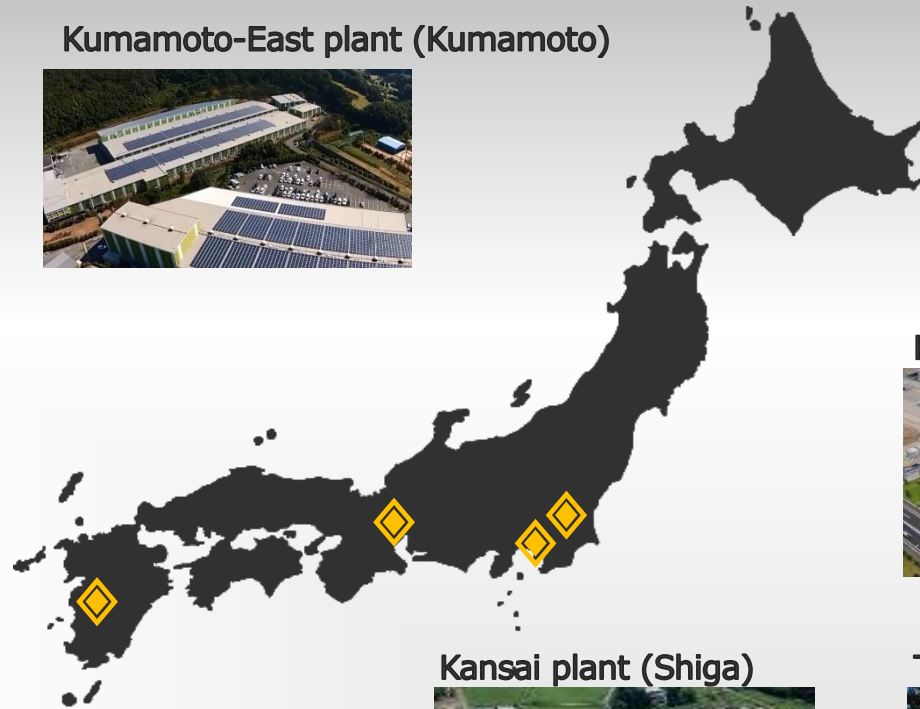
Kumamoto-East plant (Kumamoto)



Kusuno plant (Kumamoto)



Shichijo plant (Kumamoto)



Kanto plant (Tochigi)



Kansai plant (Shiga)



Tokyo office



LOCATION

HQ/Kumamoto plant

Kumamoto-East plant

Kusuno plant

Shichijo plant

Kanto plant

Kansai plant

Tokyo office

Product: Major Roles

Semiconductor, Robot: sales, design, development, manufacturing, processing, product control, planning, accounting, administration

Automobile, semiconductor/OLED, Bio: sales, design, manufacturing, product control

Semiconductor: manufacturing

Automotive, semiconductor: manufacturing

Semiconductor, automatic labor-saving equipment: sales, design, manufacturing, product control

Automobile, automatic labor-saving equipment: sales, design, manufacturing, product control

Sales

Taihei Technos Co., Ltd.

HQ: Kumamoto, + three other locations in Kumamoto
Office: Tochigi



Hirata Field Engineering Co., Ltd.

HQ: Kumamoto
Office: Tochigi and Shiga



Trinity Inc.

HQ: Tokyo
Office: Osaka and Kumamoto



Taihei Technos

Hirata Field Engineering

Trinity

Sales of electronic components, designing and manufacturing of production equipment, solar panel construction

Maintenance service for production equipment, sales of spare parts

Loyalty program for corporations and stores



Taiwan



China



China



USA



Germany



USA



Thailand



Singapore



Malaysia



Mexico

Sales, service, and manufacturing in many locales

II. Strengths of Hirata

Hirata



Automotive



Primary customers

General Motors
Ford
Chrysler
TOYOTA
NISSAN
Honda
Denso
etc.

Semi-conductor



Primary customers

Tokyo Electron
DISCO
ADVANTEST
ULVAC
EBARA
etc.

Other automatic labor-saving equipment

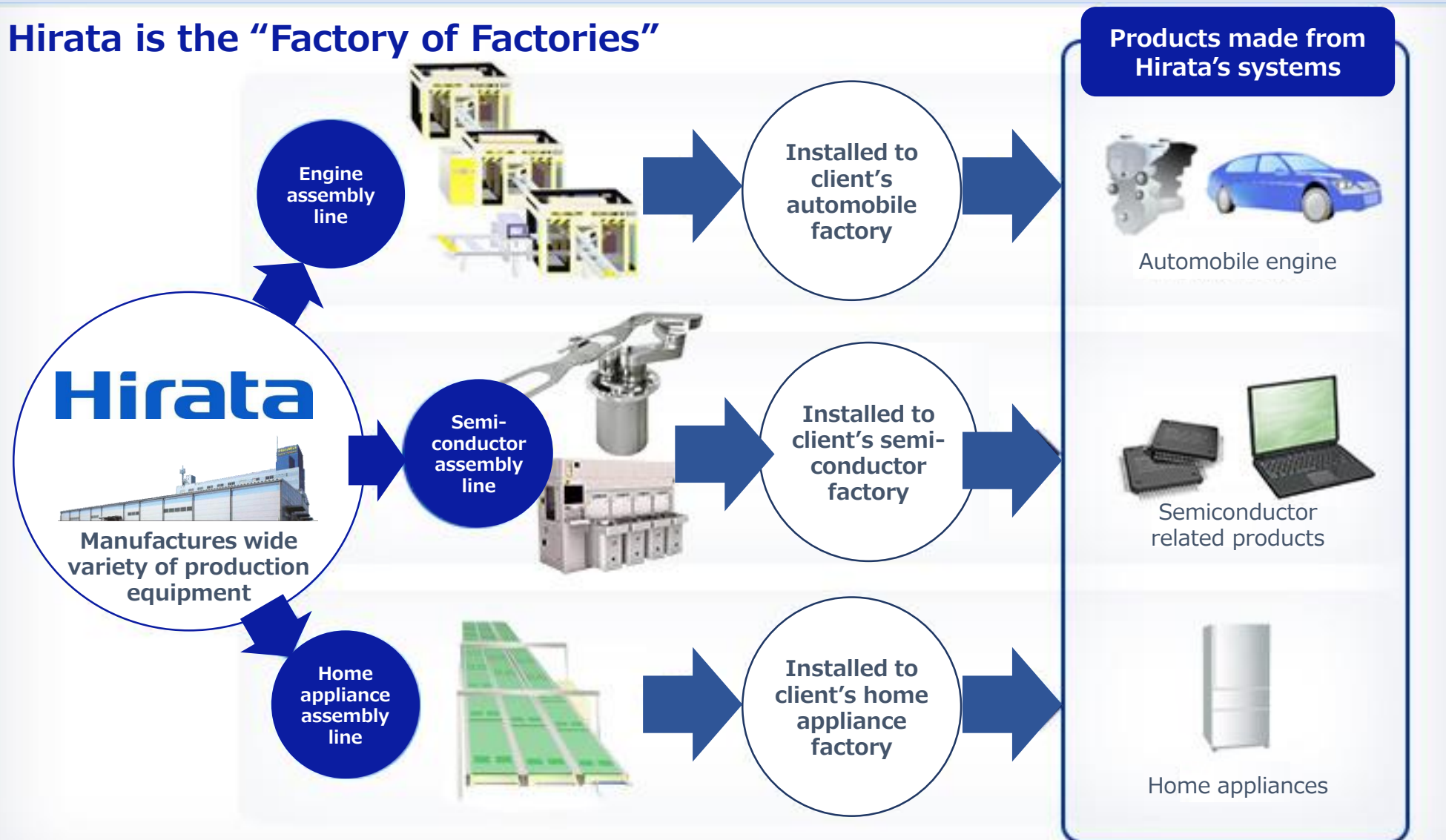


Primary customers

Dyson
Canon Tokki
TOPPAN
Hitachi
Bridgestone
Daiwa House Industry
etc.

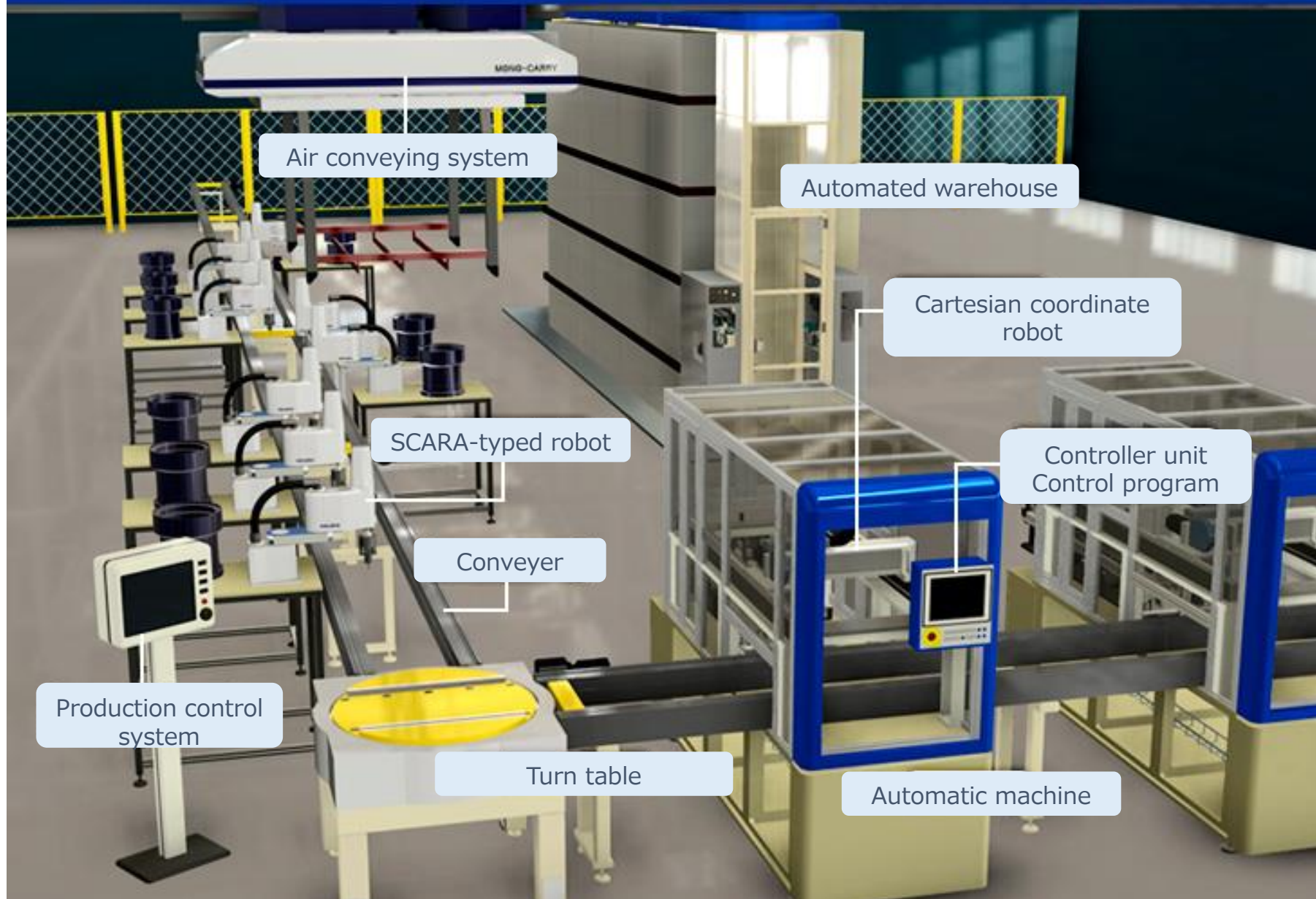
At Hirata, we design, manufacture, and sell “production equipment” for various products.

Hirata is the “Factory of Factories”



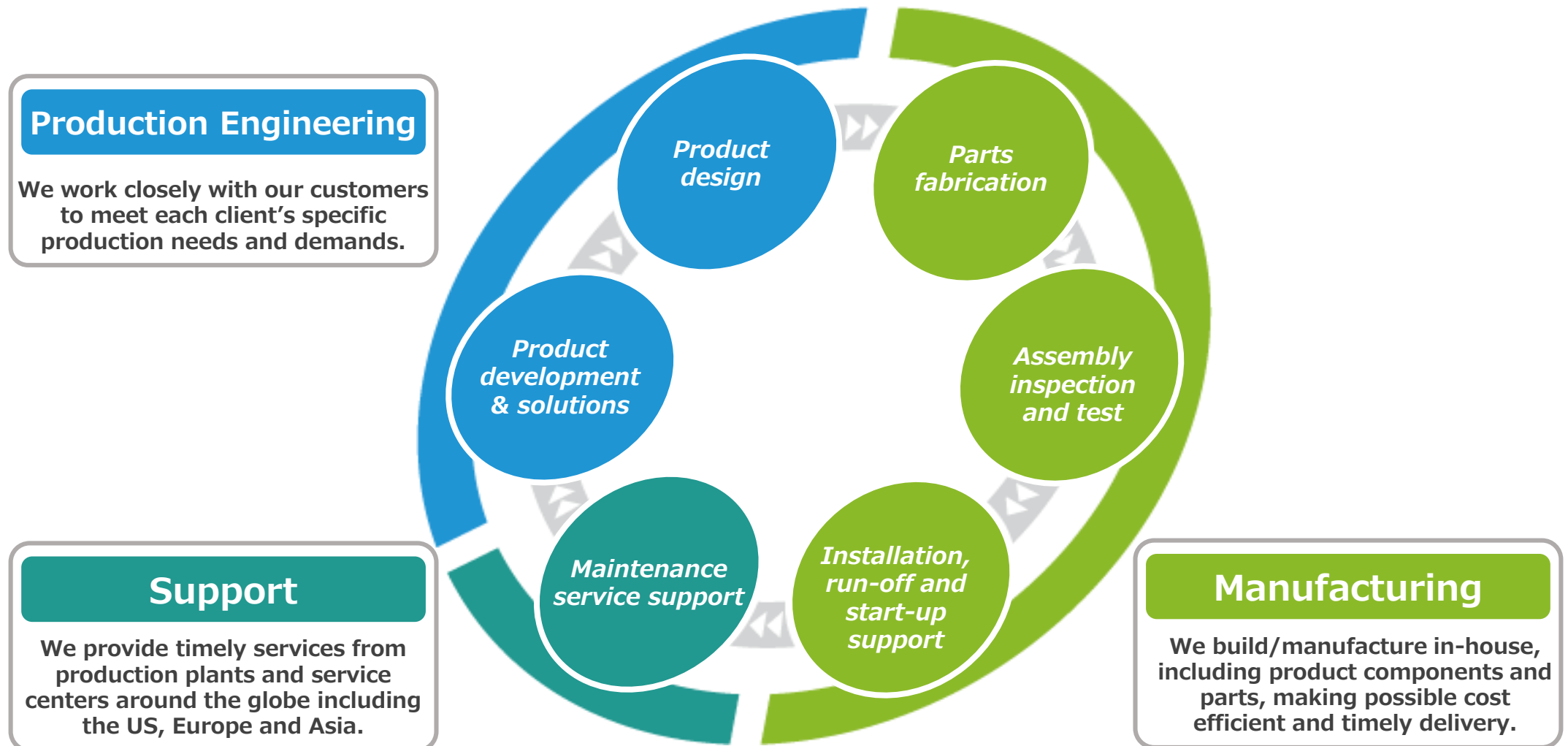
Note: The figure above is examples of our major production facilities. The appearance of production facilities and products may differ from the actual ones.

An example of Hirata's production engineering systems installed at a customer's factory



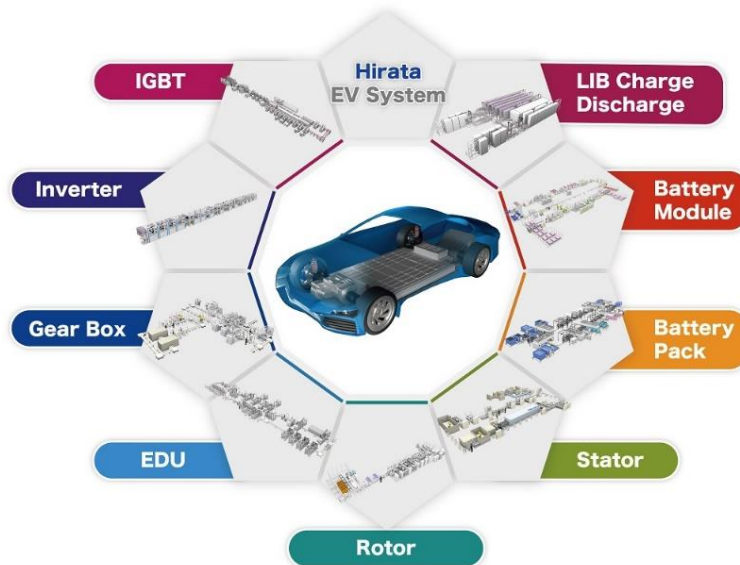
As a systems integrator, we dedicate ourselves in fully understanding each client's operations, providing optimized solutions for our client's individual business requirements, from all aspects including product design to installment, maintenance and after sale services.

Our in-house capabilities ensure smooth and comprehensive communication throughout our engineering/manufacturing process, delivering reliable high-quality equipment on a timely basis.



Automotive

- EV related production systems
- Engine, transmission production systems
- Automotive component production systems
- Reflow oven and mounters for hybrid drives



Hirata EV Systems



EV-related production systems

Semi-
conductor

- Wafer transfer robots
- Load Port(FOUP opener)
- EFEM, Sorter, Aligner



EFEM/Sorter



Load port for FOPLP*



Wafer transfer robots



Vacuum platform



Aligner

Other automatic labor-saving equipment

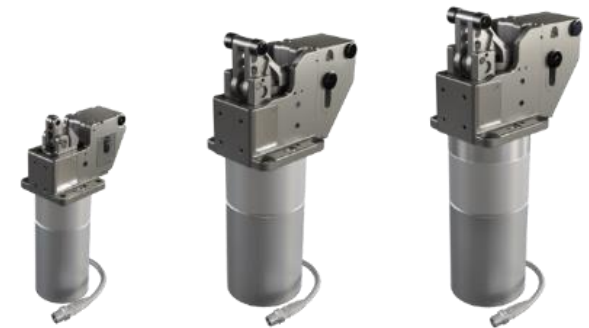
- Industrial robots
- Commissioning manufacture of organic EL panel and vacuum evaporation systems
- Factory Automation component sales
- Home appliance production equipment
- Medical, Chemistry & Physics devices



Vertical articulated robot



Deposition equipment for OLED



Electric stopper



Coater systems



Smart rack-less stocker



Pathological tissue specimen
Preparation device EZ-path float